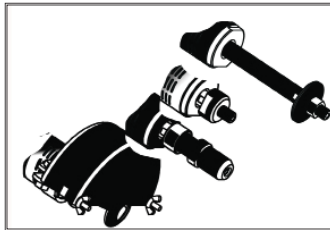


HENRY AIRTOOLS

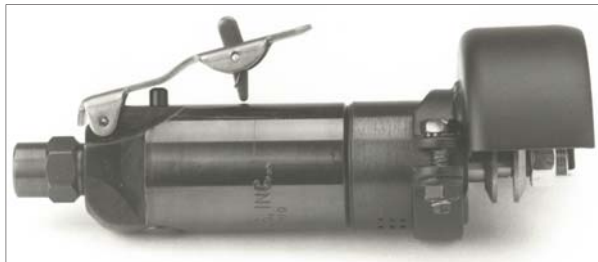
American Made Industrial Tools



General Safety and Maintenance Manual



MODELS
4126AG
4126AGKCW
4126AG+3"
4126AG+6"



| Model Number | Exhaust Direction | Throttle Type | Speed | Power Output | Case Material | Weight | | Length | Diameter | Air Consumption | Wheel Capacity |
|--------------|-------------------|-------------------------------|--|----------------|-------------------|---------------|---------------|------------------|------------------|------------------|-------------------------------------|
| | | | | | | Aluminum | Steel | | | | |
| 4126AG | Side Exhaust | (L) Lever or (K) Safety Lever | 15000 to 22000 R.P.M. (18000RPM is Standard) | 0.9 H.P. 675 W | Steel or Aluminum | 1.5 lb/0.7 Kg | 2.0 lb/0.9 Kg | 6.9 inch 175 mm | 1.6 inches 41 mm | 1.6 inches 41 mm | 2" (50mm), 3" (75mm), or 4" (100mm) |
| 4126AG+3 | | | | | | 1.6 lb/0.7 Kg | 2.0 lb/0.9 Kg | 9.3 inch 236 mm | | | |
| 4126AG+6 | | | | | | 1.7 lb/0.8 Kg | 2.1 lb/1.0 Kg | 12.3 inch 312 mm | | | |

THE HENRY TOOL CO., MANUFACTURED BY HENRY TOOLS

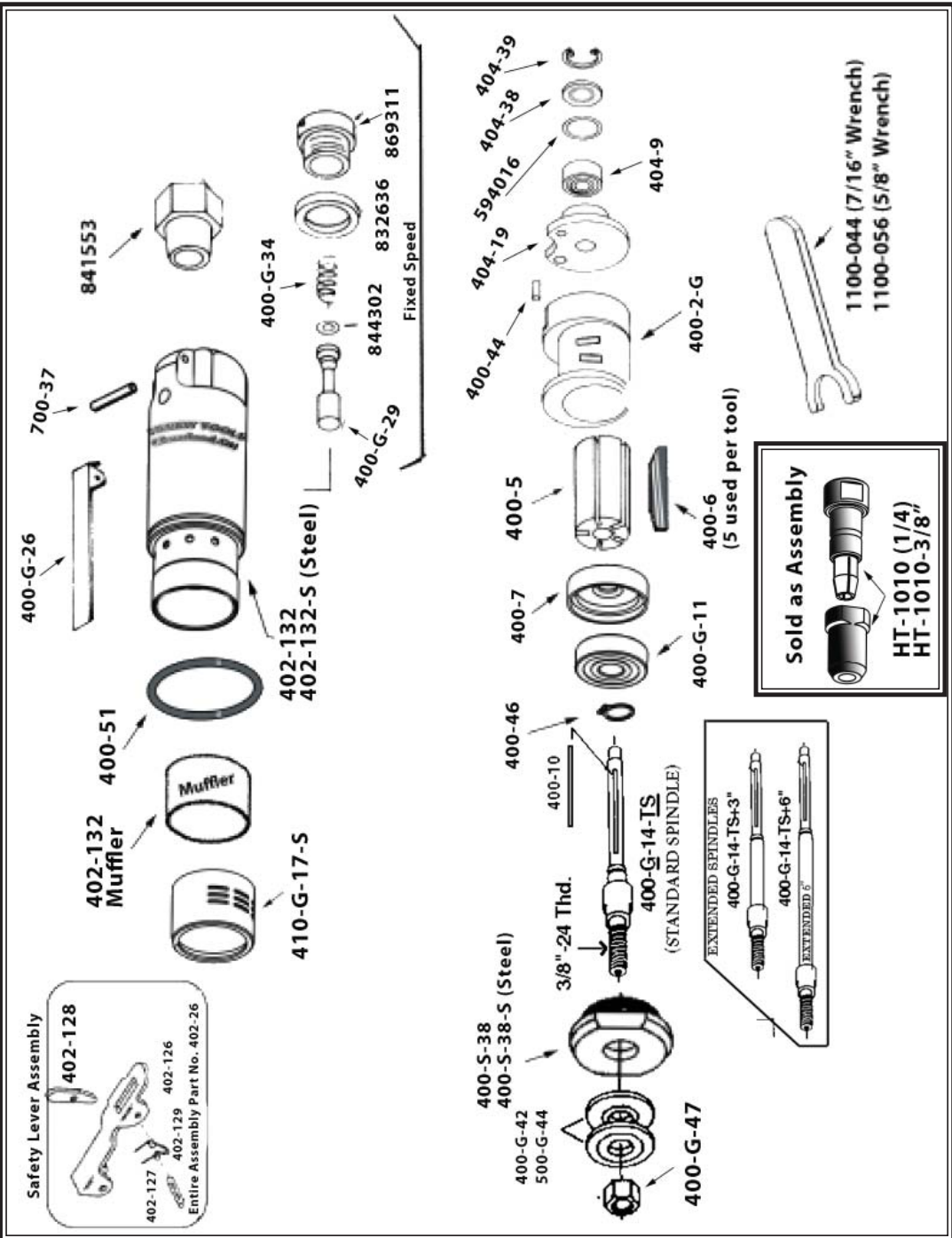
498 SO. BELVOIR BLVD., SOUTH EUCLID, OH 44121 U.S.A.

PH: (216) 291-1011 OR (800) 826-5257 • FAX: (216) 291-5949 OR (800) 303-2800

EMAIL: DAVIIDH@MSN.COM • WEBSITE: WWW.HENRYTOOLS.COM



MODELS
4126AG
4126AGKCW
4126AG+3"
4126AG+6"



General Operators Instructions and Service Manual



MODELS 4126AG 4126AGK CW 4126AG+3" 4126AG+6"

| PART | DESCRIPTION |
|---------------|---|
| 200-16 | O-RING |
| 400-G-11 | FRONT BEARING |
| 400-G-14-TS | COLLET SPINDLE (STANDARD LENGTH) |
| 400-G-14-TS+3 | 3" EXTENDED COLLET SPINDLE |
| 400-G-14-TS+6 | 6" EXTENDED COLLET SPINDLE |
| 400-G-26 | THROTTLE LEVER |
| 400-G-29 | THROTTLE VALVE-INCLUDES 844302 |
| 400-G-34 | SPRING |
| 400-G-42 | FLANGE FOR 2"-3" WHEELS |
| 400-G-47 | JAM NUT |
| 400-2G | CYLINDER |
| 400-5 | ROTOR |
| 400-6 | BLADE (5 REQ) |
| 400-7 | FRONT ENDPLATE |
| 400-10 | KEY |
| 400-44 | ROLL PIN |
| 400-46 | SNAP RING |
| 400-51 | O-RING |
| 402-26 | SAFETY LEVER (ASSEMBLED COMPLETE) |
| 402-126 | SAFETY LEVER |
| 402-127 | SAFETY LEVER PIN |
| 402-128 | LOCKOUT LEVER |
| 402-129 | SAFETY LEVER SPRING |
| 402-132 | ALUMINUM CASE (SPECIFY SPEED) |
| 402-132-S | STEEL CASE (SPECIFY SPEED) |
| 402-132-S-FT | STEEL FLOW THRU CASE (SPECIFY SPEED) (special) |
| 402-134 | MUFFLER |
| 404-9 | REAR BEARING |
| 404-19 | REAR ENDPLATE |
| 404-38 | BEARING COVER |
| 404-39 | SNAP RING |
| 410-G-17-S | STEEL SIDE EXHAUST SLEEVE |
| 400-S-38 | ALUMINUM MOTOR RETAINER |
| 400-S-38-S | STEEL MOTOR RETAINER |
| 500-G-44 | FLANGE FOR 4" WHEELS |
| 700-37 | THROTTLE LEVER PIN |
| 592016 | SNAP RING |
| 594016 | O-RING |
| 832636 | GASKET |
| 841552 | 3/8 NPT TO 3/8 NPT BUSHING |
| 841553 | 3/8 NPT TO 1/4 NPT BUSHING |
| 844302 | O-RING |
| 869311 | THROTTLE VALVE CAP |

| PART | DESCRIPTION |
|--------------------|--|
| 1100-044 | 7/16" WRENCH |
| 1100-063 | 5/8" WRENCH |
| ASSEMBLIES | |
| 402-26 | SAFETY LEVER ASSY. (COMPLETE) |
| AA-402-132 | ALUMINUM CASE ASSY. |
| AA-402-132-K | ALUMINUM SAFETY CASE ASSY. (with SAFETY LOCK HANDLE) |
| AA-402-132-S | STEEL CASE ASSY. |
| AA-402-132-SK | STEEL SAFETY CASE ASSY. (with SAFETY LOCK HANDLE) |
| REPAIR KITS | |
| 510240 | REPAIR KIT INCLUDES ALL BEARINGS, ROTOR BLADES AND SNAP RINGS. |

| COLLET ASSEMBLIES | |
|------------------------------|--|
| PART | DESCRIPTION |
| AA-209-1/8 | 3/8-24 ERICKSON 3 PIECE--1/8" INSERT |
| AA-209-1/4 | 3/8-24 ERICKSON 3 PIECE--1/4" INSERT |
| AA-209-3/8 | 3/8-24 ERICKSON 3 PIECE--3/8" INSERT |
| HT-1010 | 3/8-24 TO 1/4" I.D.- 2 PIECE HEAVY DUTY |
| HT-1010-3/8 | 3/8-24 TO 1/4" I.D.- 2 PIECE HEAVY DUTY |
| ERICKSON COLLET PARTS | |
| 209-B | 3/8-24 COLLET BODY |
| 209-1 | COLLET NUT |
| 209-1/8 | 1/8" INSERT |
| 209-3/16 | 3/16" INSERT |
| 209-1/4 | 1/4" INSERT |
| 209-5/16 | 5/16" INSERT |
| 209-3/8 | 3/8" INSERT |
| SPACERS | |
| 400-76J | 9/16 UNTHREADED SPACER |
| 400-76J-3/8 | 3/8 UNTHREADED SPACER |
| 400-77 | 3/8-24 THREADED 9/16 SPACER (FOR CONE WHEEL) |
| 400-77J | 3/8-24 THREADED 3/8 SPACER |
| 400-78 | 3/8-24 TO 5/8-11 ADAPTER |
| GUARDS | |
| 4503 | 3" GUARD |
| 4504 | 4" GUARD |

General Operators Instructions and Service Manual



MODELS

4126AG
4126AGKCW
4126AG+3"
4126AG+6"

| COLLET ASSEMBLIES | |
|------------------------------|--|
| AA-209-1/8 | 3/8-24 ERICKSON 3 PIECE--1/8" INSERT |
| AA-209-1/4 | 3/8-24 ERICKSON 3 PIECE--1/4" INSERT |
| AA-209-3/8 | 3/8-24 ERICKSON 3 PIECE--3/8" INSERT |
| HT-1010 | 3/8-24 TO 1/4" I.D.- 2 PIECE HEAVY DUTY |
| HT-1010-3/8 | 3/8-24 TO 1/4" I.D.- 2 PIECE HEAVY DUTY |
| | OTHER SIZES AVAILABLE |
| ERICKSON COLLET PARTS | |
| 209-B | 3/8-24 COLLET BODY |
| 209-1 | COLLET NUT |
| 209-1/8 | 1/8" INSERT |
| 209-3/16 | 3/16" INSERT |
| 209-1/4 | 1/4" INSERT |
| 209-5/16 | 5/16" INSERT |
| 209-3/8 | 3/8" INSERT |
| | |
| SPACERS | |
| 400-76J | 9/16 UNTHREADED SPACER |
| 400-76J-3/8 | 3/8 UNTHREADED SPACER |
| 400-77 | 3/8-24 THREADED 9/16 SPACER (FOR CONE WHEEL) |
| 400-77J | 3/8-24 THREADED 3/8 SPACER |
| 400-78 | 3/8-24 TO 5/8-11 ADAPTER |
| OTHER SIZE INSERTS AVAILABLE | |
| GUARDS | |
| 4503 | 3" GUARD |
| 4504 | 4" GUARD |
| | |

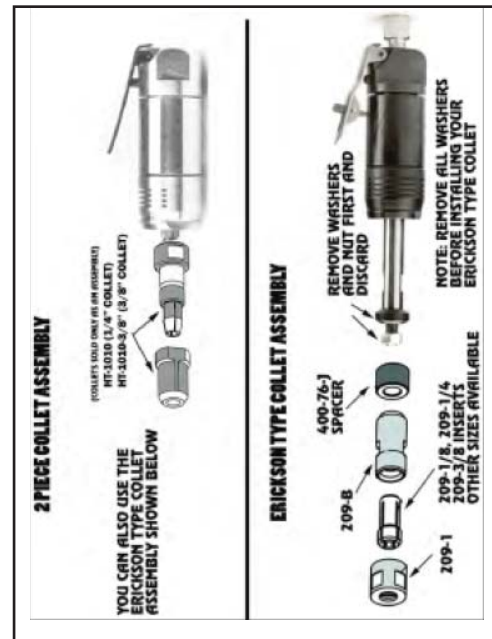
Mounting Abrasives

The mounting of the abrasive used with the tool is very important to ensure safety for the operator and proper functioning of the tool. There are strict rules for mounting wheels that are outlined in ANSI B7.1-2000. The following diagrams briefly describe the methods and equipment for mounting most abrasives.

Each wheel/mounted stone is labeled with a maximum operating speed. It is extremely important to compare this rating with the maximum operating speed of the tool. Never mount a wheel/carbide burr on a tool where the maximum operating speed of the tool is higher than the maximum operating speed of the wheel. This can cause an over speed situation and can result in injury. The following list details specific items one should inspect and be aware of when mounting abrasives.

- The maximum operating speed marked on the wheel must be equal to or higher than the rated spindle speed (free speed) of the tool.
- Check the wheel dimensions so that it fits within the guard properly.
- Do not use any wheel that shows cracks, chips or evidence it has been soaked in fluids.
- Wheel flanges should have flat contact surfaces and be without cracks or burrs.

For more information:



1) General Industry Safety & Health Regulations 29 CFR, Part 1910 and where applicable Construction Industry Safety & Health Regulations 29 CFR, Part 1926 available from Superintendent of Documents, Gov't. Printing Office, Washington, D.C. 20402.

2) Safety Code For Portable Air Tools, ANSI B186.1, B7.1 and Z87.1, available from American National Standards Institute, Inc. 1430 Broadway, New York, NY 10018

HENRY TOOLS, INC. Ph: (216) 291-1011 or (800) 826-5257

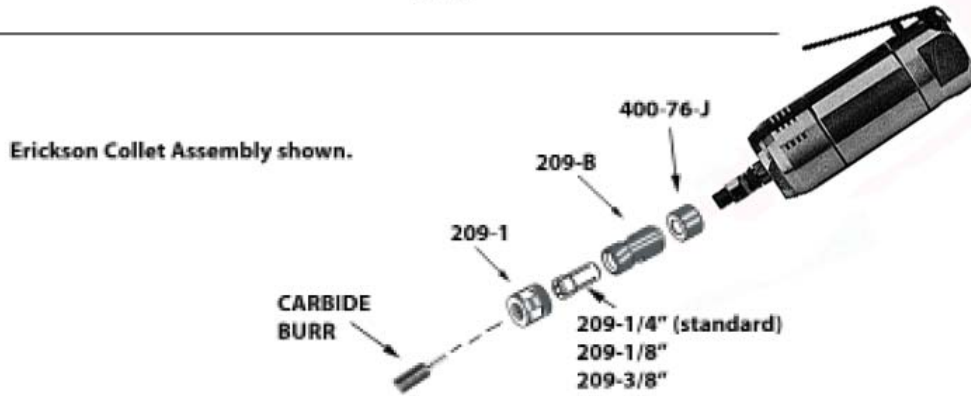
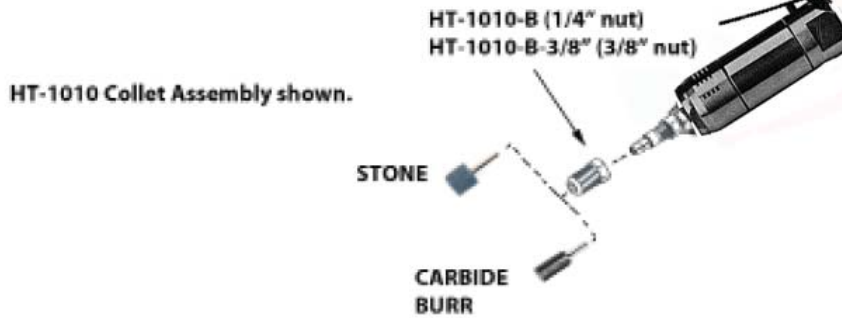


MODELS
4126AG
4126AGKCW
4126AG+3'
4126AG+6'

SAMPLE : MOUNTING OF CONE WHEELS ON HORIZONTAL GRINDERS



SAMPLE : MOUNTING OF CARBIDE BURRS ON HORIZONTAL GRINDERS



Sample: Horizontal Grinder with Guard for mounting Type 1 grinding wheels.





MODELS
4126AG
4126AGKCW
4126AG+3”
4126AG+6”

GRINDER SAFETY

ALWAYS COMPLY WITH:

1. General Industry Safety & Health Regulations, Part 1910, OSHA 2206, available from: Sup't of Documents; Government Printing Office; Washington DC 20402
2. Safety Code for Portable Air Tools, ANSI B186.1 available from: American National Standards Institute, Inc.; 1430 Broadway; New York, NY 10018
3. State and Local regulations.
4. Portions of the above codes and regulations are listed below for quick reference.

THESE EXCERPTS ARE NOT INTENDED TO BE ALL INCLUSIVE - STUDY AND COMPLY WITH ALL REGULATIONS!

1. Always turn off the air supply and disconnect the air supply hose before installing, removing or adjusting any accessory on this tool, or before performing any maintenance on this tool.
2. After mounting a wheel or other abrasive accessory, the Grinder shall be run in a protected enclosure, at gradually increasing speed, for at least 60 seconds. When starting work with a cold wheel, apply it gradually to the workpiece until it becomes warm. Do not continue to use a grinder if:
 - The speed rating of the accessory is less than the speed of the grinder
 - If tool vibrates repair immediately.
 - You sense changes in tool speed or an unusual increase in noise that would indicate tool is running at excessive speed.
 - You notice excessive end play in spindle
 - You hear any unusual sound from grinder

RETURN THE TOOL TO THE TOOL CRIB FOR SERVICE IMMEDIATELY.

3. Make certain no one is in front of or in line with the wheel or other abrasive accessory. Be aware that it may fail at this time if it is defective, improperly mounted or the wrong size and speed. Stop immediately if considerable vibration or other defects are detected. Shut off the air supply and determine the cause.
4. **OPERATOR PROTECTIVE EQUIPMENT** - Wear goggles or face shield at all times tool is in operation. Other protective clothing shall be worn, if necessary. SEE REGULATIONS.
5. Keep hands, loose clothing and long hair away from rotating end of tool.
6. Anticipate and be alert for sudden changes in motion during start up and operation of any power tool.

7. Keep body stance balanced and firm. Do not overreach when operating this tool. High reaction torques can occur at or below the recommended air pressure.

8. Tool accessories may continue to rotate briefly after throttle is released.

9. Air powered tools can vibrate in use. Vibration, repetitive motions or uncomfortable positions may be harmful to your hands and arms. Stop using any tool if discomfort, tingling feeling or pain occurs. Seek medical advice before resuming use.

10. This tool is not designed for working in explosive atmospheres. Do not use this tool on materials whose dust or fumes can cause a potentially explosive environment.

11.

12. This tool is not insulated against electric shock.

13. Product Safety information - When Placing the Tool in Service

- **NEVER MODIFY ANY PART OF THIS TOOL!!!!** Always install, operate, inspect and maintain this product in accordance with all applicable standards and regulations (local, state, country, federal, etc.).

- Always use clean, dry air at 90 psig (6.2 bar/620 kPa) maximum air pressure at the inlet. Higher pressure may result in hazardous situations including excessive speed, rupture, or incorrect output torque or force.

- Be sure all hoses and fittings are the correct size and are tightly secured.

- Install a properly sized Safety Air Fuse upstream of hose

HENRY TOOLS, INC. Ph: (216) 291-1011 or (800) 826-5257